



(800) 570-3551 info@sundancegrinders.com www.sundancegrinders.com

SERVICE BULLETIN

TO: Owners of all Sundance Grinders with Stein Clutch

FROM: Service Department

SUBJECT: Clutch Free Play

DATE: June 24, 2009

We have come across several grinders lately that have little or no clutch free play. This will result in premature clutch release bearing failure or premature clutch failure. The reason for the free play is to insure that the clutch release bearing is not applying pressure to the pressure plate and to insure that the clutch is completely engaged.

If the clutch release linkage is holding the clutch release bearing up against the pressure plate, the clutch release bearing will be turning anytime the engine is running, resulting in premature clutch release bearing failure. The only time the clutch release bearing should be applying pressure to the pressure plate and turning is when the clutch is disengaged.

If the clutch linkage adjustment is not allowing the clutch release bearing to fully release the pressure plate, it will be applying disengagement pressure on the pressure plate, preventing the clutch from fully engaging. This will result in clutch slippage and premature failure.

To quote from the Operator's Manual:

ADJUSTING CLUTCH FREE PLAY

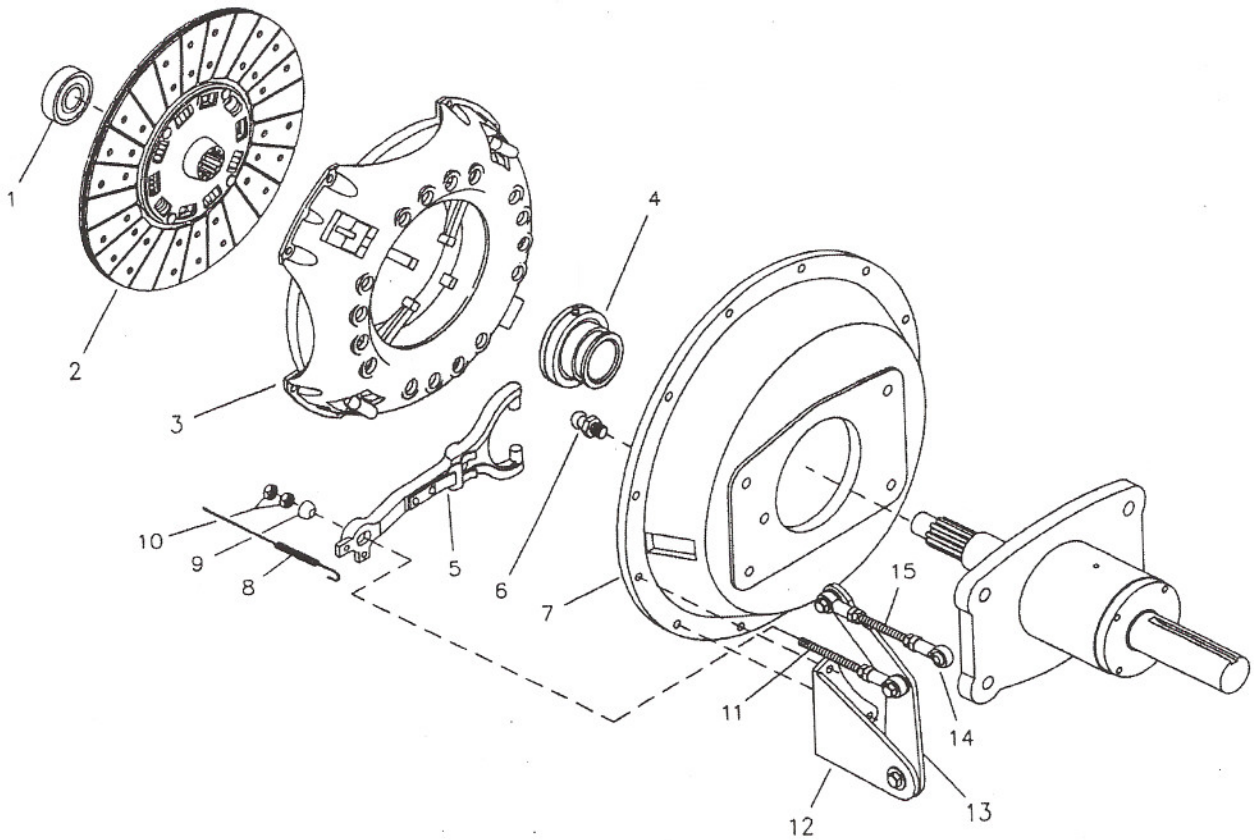
With the clutch engaged and the rotor turning, check for play or movement in the clutch lever. You must have 2 inches or more of play at the end of the handle for proper clutch operation. If you have less than 2 inches of play, loosen the nut on the lower rod at the clutch release fork until you have 2 inches of play at the end of the handle. As the amount of play decreases, adjust to keep at least 2 inches of play. The objective is to keep the clutch release bearing away from the pressure plate and extend the life of the clutch and the release bearing.

I recommend that you check your grinder to insure that:

- 1) The clutch return spring is in place. This is an extension spring that pulls the clutch linkage, clutch release fork and clutch release bearing away from the clutch pressure plate when fully engaged. If your clutch return spring is missing, please order part no. 700-10106.
- 2) Please insure that there is a minimum of 2"/50 mm of free play at the end of the clutch engagement handle. The only resistance during this free play should be the return spring. You should not feel the clutch release bearing contact the pressure plate during this free play. If your free play is inadequate, lengthen one or both of the linkage rods until free play is adequate. Be sure to lock the adjustment rods when adjustment is complete.

Stein Clutch Assembly

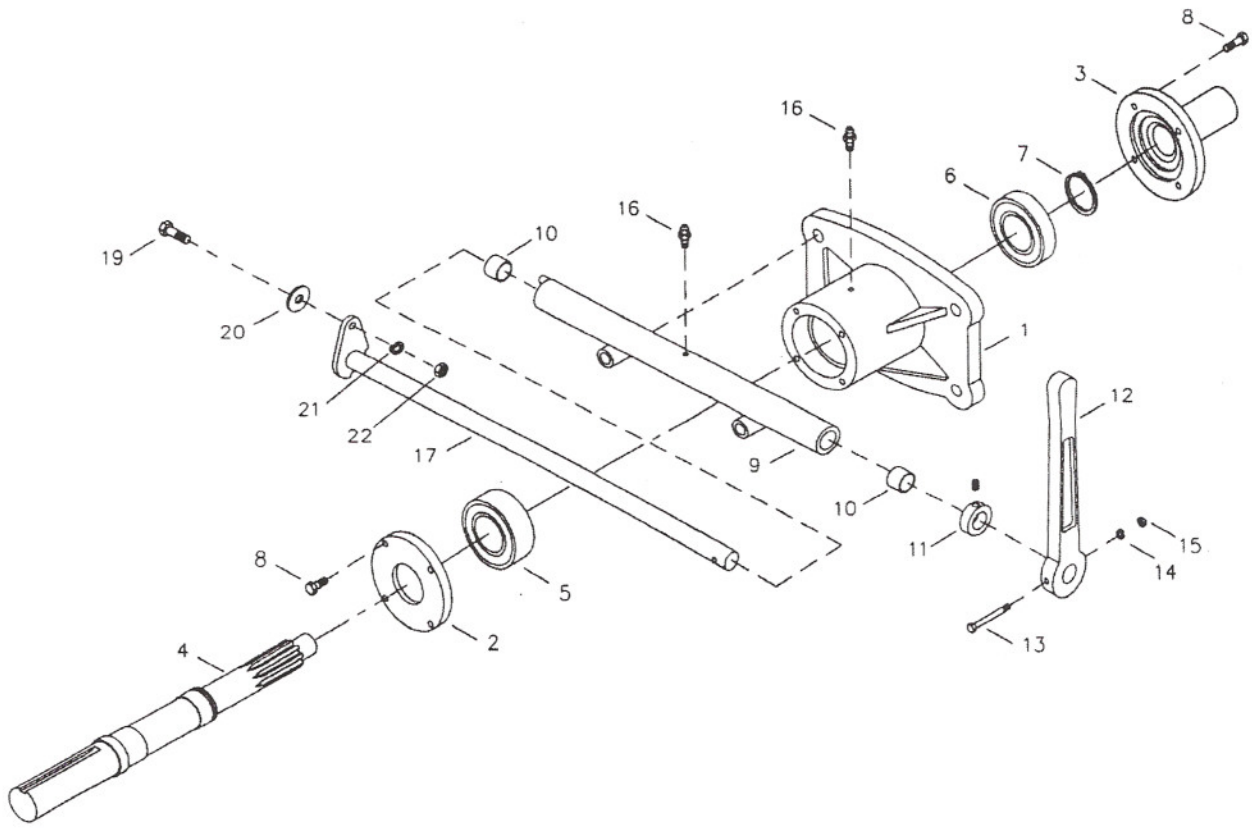
Used with Perkins 1104C and John Deere 4045 engines



Ref	Part No.	Description
1	700-SM305	Pilot Bearing
2	700-280629	Clutch Disc Assembly 13"
3	700-260539	Clutch Pressure Plate 13"
4	700-SM1425	Clutch Release Bearing
5	700-SM7515	Clutch Release Fork
6	700-SM7522	Clutch Fork Ball
7	700-1831	Clutch Assembly Housing
8	700-10106	Clutch Return Spring
9	700-10107	Clutch Fork Pivot
10		3/8-24 Hex Nut
11	700-3-226	3/8-24 X 3-1/4 Long Rod
12	700-3-224	Pivot Bracket
13	700-3-223	Pivot Arm
14	700-3-218	3/8-24 Ball Joint
15	700-3-225	3/8-24 X 2-1/2 Long Rod

Stein PTO Assembly

Used with Perkins 1104C and John Deere 4045 engines



Ref	Part No.	Description
1	700-400-201	Bearing Housing
2	700-400-202	Bearing Retainer Cap
3	700-400-203	Throwout Bearing Collar
4	700-400-204	Drive Shaft
5	700-400-205	Front Bearing
6	700-400-206	Rear Bearing
7	700-400-207	Snap Ring
8		5/16-18 X 1" Hex Head Cap Screw (Qty 8)
9	700-400-209	Pivot Shaft Tube
10	700-400-210	7/8" ID X 1" OD X 3/4" Bushing (Qty 2)
11	700-400-211	7/8" Set Collar
12	700-400-212	Handle
13		1/4-20 X 2-1/2" Hex Head Cap Screw
14		1/4" Lock Washer
15		1/4-20 Hex Nut
16		1/4-28 UNF Grease Fitting (Qty 2)
17	700-400-217	Pivot Shaft
18		
19		3/8-24 X 1-1/4 Hex Head Cap Screw (Qty 3)
20		3/8" Flat Washer (Qty 3)
21		3/8" Lock Washer (Qty 3)
22		3/8-24 UNF Hex Nut (Qty 3)